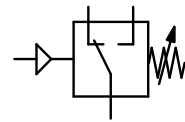


PRESSURE SWITCH WITH ADJUSTABLE HYSTERESIS FOR PCB, TYPE "AIRTROL®" F4000 / F4400

| | | | |
|-----------------------------|--|--|--|
| Description | High-precision pressure and vacuum switch with electrical outlet signal. The microswitch satisfies UL and CSA regulations. Polysulphone of the body approved by National Sanitation Foundation. The switch also complies with FDA regulations and is suitable for water and food products. | | |
| Media | compressed air, non-corrosive gases or liquids | | |
| Switch contact | micro SPDT switch, covered by plastic cap | | |
| Contact load | 15 A at 230 V AC, 1.2 A at 125 V DC | see chart, consultation needed for AT1004 | |
| Electrical connector | 3 A or 4 A at 230 V AC, 0.187" (4.75 mm) quick connector for Molex connector | see chart for F4000 and AT1004 | |
| Repeatability | 0.060" (1.52 mm) solder leads | for F4400 | |
| Certifications | ± 2% FS | Spring: stainless steel | |
| Switching time | CSA-certified and UL-listed | Media non-contact parts: nylon, carbon fibre nylon, acetal | |
| Mounting position | 25 ms | | |
| Temperature range | any | | |
| Material | 4 °C to 66 °C / 40 °F to 150 °F | | |
| | Body: polysulphone | | |
| | Diaphragm: polyurethane | | |



4 ... 12 mbar / 7 bar
-7 ... -170 mbar / -1 bar

| Description | Contact rating | Hysteresis typical | Over-pressure max. | Measurement range off | Measurement range on | Order number |
|-------------|----------------|--------------------|--------------------|-----------------------|----------------------|--------------|
| | max. A | mbar | mbar | mbar/bar | mbar/bar | |

| Pressure and vacuum switch | with adjustable hysteresis nylon fitting, Ø 1/16", Ø 2 mm | | | | F4000 | |
|----------------------------|---|---|---|----|----------------------------------|--------------|
| pressure switch | 15 | - | - | 1 | 4... 12 mbar 6... 40 mbar | F4000- 20B80 |
| | 15 | - | - | 1 | 4... 37 mbar 8... 150 mbar | F4000- 30B80 |
| vacuum switch | 15 | - | - | -1 | -70...-380 mbar -135...-500 mbar | F4000- X B80 |

| Pressure switch for PCB | with small hysteresis nylon fitting, Ø 1/16", Ø 2 mm | | | | F4400 | |
|-------------------------|--|-----|-----|----|----------------------|--------------|
| pressure switch | 3 | 7 | 14 | 2 | 0.014 ... 0.14 bar | F4400- 2B80 |
| | 4 | 14 | 24 | 2 | 0.035 ... 0.35 bar | F4400- 5B80 |
| | 4 | 30 | 41 | 3 | 0.035 ... 1.0 bar | F4400- 15B80 |
| | 4 | 40 | 70 | 4 | 0.035 ... 2.1 bar | F4400- 30B80 |
| | 4 | 100 | 170 | 8 | 0.035 ... 4.2 bar | F4400- 60B80 |
| | 4 | 140 | 240 | 8 | 0.070 ... 7.0 bar | F4400-100B80 |
| vacuum switch | 4 | 10 | 20 | -1 | -0.007 ... -0.17 bar | F4400-X 5B80 |
| | 4 | 20 | 34 | -1 | -0.015 ... -0.34 bar | F4400-X10B80 |
| | 4 | 30 | 50 | -1 | -0.050 ... -1.00 bar | F4400-X30B80 |

| Pressure switch, factory-set | nylon fitting, ± 10% tolerance Ø 1/16", Ø 2 mm, SPDT switch | | AT1004 |
|------------------------------|---|--|--------------|
| pressure switch | switching point to be indicated on order | | 4...43 mbar |
| | | | AT1004-..B80 |

| Special options, | add the appropriate letter | | |
|---|--|-------------------------------|---------------|
| barbed fitting | made of | nylon, Ø 1/8", Ø 4 mm | F4.00-... B85 |
| | | polysulphone, Ø 1/16", Ø 2 mm | F4.00-... P80 |
| | | polysulphone, Ø 1/8", Ø 4 mm | F4.00-... P85 |
| factory-set switch point free of oil and grease | ± 5%, switching point to be indicated on order | | F4.00-... X |
| | specialty cleaned, suitable for oxygen | | F4.00-... L |



F4000-30B80



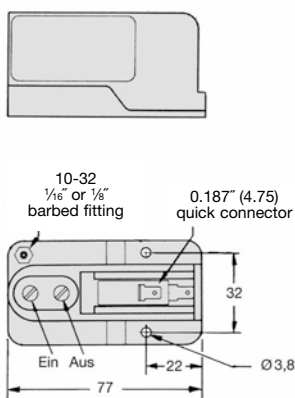
F4400-100B80



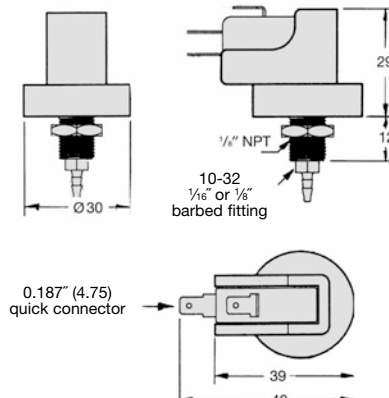
AT1004-17



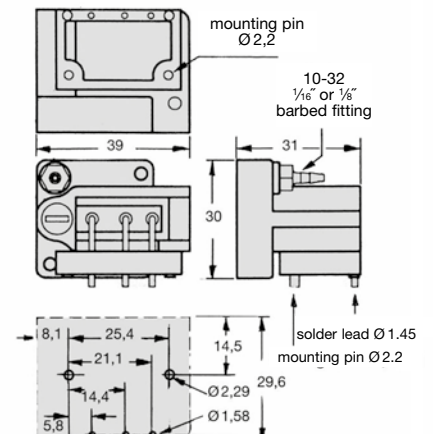
cover cap for pressure switch supplied



F4000



AT1004



F4400

*1 not adjustable

